

PART OF N.W. 1/4 OF S.E. 1/4 OF SEC. 27, T. 6 N., R. 1 W., S.L.B. & M.

100

NOB HILL ADDITION

BLOCKS 33 & 34

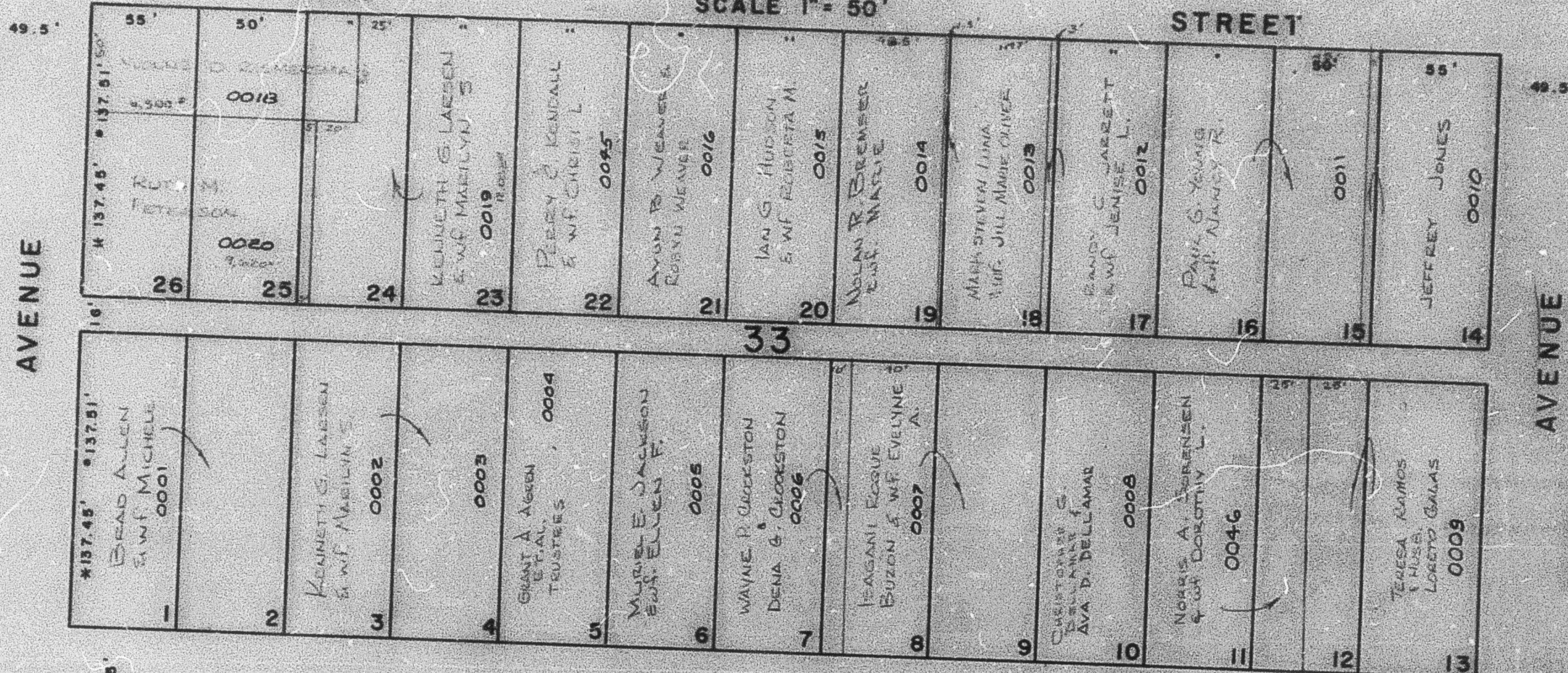
TAXING UNIT: 25

SEE PAGE 99

IN OGDEN CITY

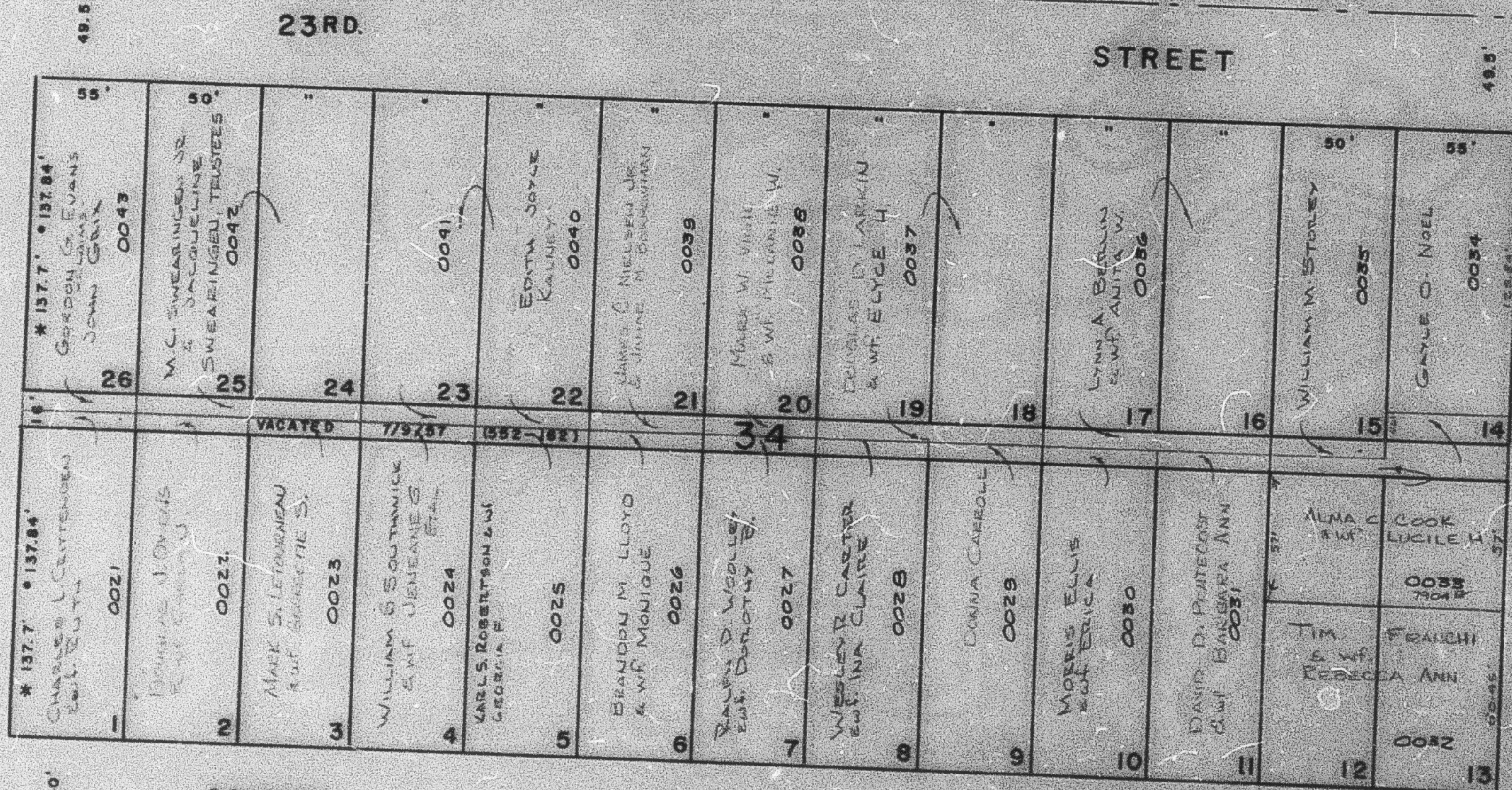
SCALE 1" = 50'

PREFIX: 13-100



SEE PAGE 107

SEE PAGE 93



SEE PAGE 106